

---

# FABRICS

---

MISSANA

FEBRIK

## BEANS



<b>Composition</b>	27% wool / 8% polyamide / 13% polyester / 7% elasthan / 45% polyester filling	
<b>Weight</b>	850 g/m <sup>2</sup>	(tolerance +/- 5%)
<b>Width</b>	165 cm	(tolerance +/- 2%)
<b>Number of colours</b>	9	
<b>Abrasion</b>	>60.000	
<b>Pilling</b>	4 - 5 (5.000)	
<b>Fastness to rubbing</b>	dry 4 / wet 3 - 4	
<b>Fastness to light</b>	6 - 7	
<b>Flame resistance</b>	EN 1021-1/2, BS 5852 part 1, DIN 4102-B2, US Cal. Tech. Bull. 117	

## CROSS



<b>Composition</b>	20% wool / 5% polyamide / 15% polyester / 60% polyester filling	
<b>Weight</b>	900 g/m <sup>2</sup>	(tolerance +/- 5%)
<b>Width</b>	200 cm	(tolerance +/- 2%)
<b>Number of colours</b>	7	
<b>Abrasion</b>	>50.000	
<b>Pilling</b>	4 (5.000)	
<b>Fastness to rubbing</b>	dry 4 - 5 / wet 4 - 5	
<b>Fastness to light</b>	6 - 7	
<b>Flame resistance</b>	EN 1021-1/2, BS 5852 part 1, DIN 4102-B2, US Cal. Tech. Bull. 117	

## DOTTY



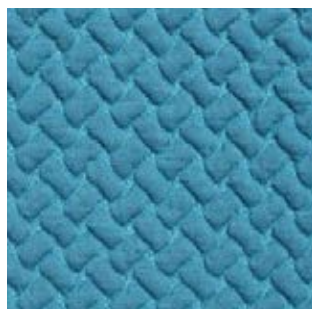
<b>Composition</b>	55% wool / 20% polyamide / 25% polyester	
<b>Weight</b>	490 g/m <sup>2</sup>	(tolerance +/- 5%)
<b>Width</b>	160 cm	(tolerance +/- 2%)
<b>Number of colours</b>	24	
<b>Abrasion</b>	>80.000	
<b>Pilling</b>	4 (5.000)	
<b>Fastness to rubbing</b>	dry 3 - 4 / wet 4	
<b>Fastness to light</b>	6	
<b>Flame resistance</b>	EN 1021-1/2, BS 5852 part 1, DIN 4102-B2, US Cal. Tech. Bull. 117 IMO FTP Code part 8	

# FEBRIK

---

BEANS

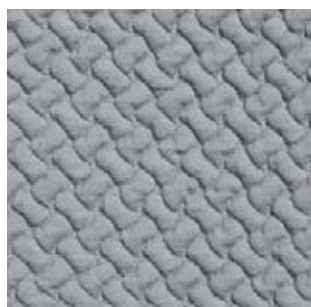
design by Febrik



AQUATIC



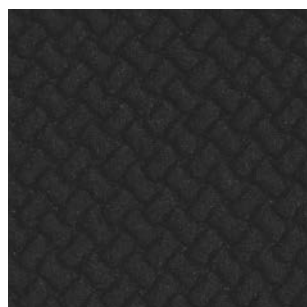
GRASS



GREY



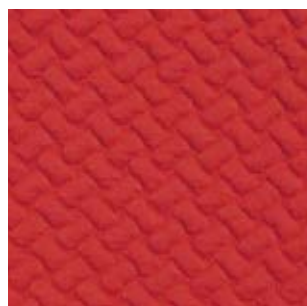
GRAPHITE



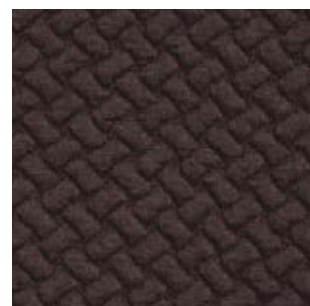
CAVIAR



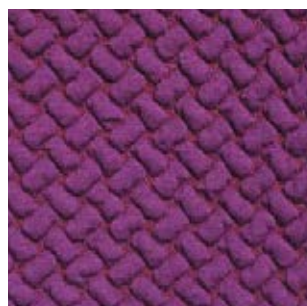
ORANGE



PASSION



CHOCOLATE



FUCHSIA

# FEBRIK

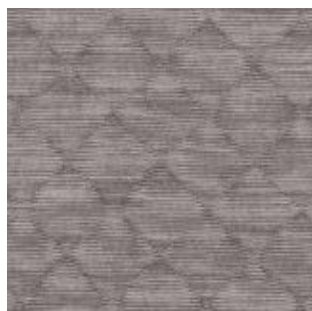
---

CROSS

design by Febrik



SHELL



PEBBLE



BRICK



COPPER



SMOKE



MINERAL

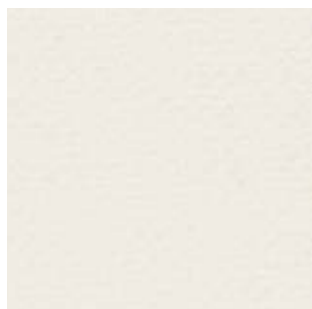


CHALK

# FEBRIK

DOTTY

design by Febrik



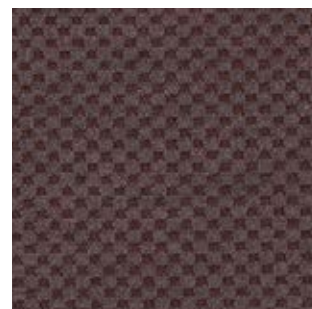
NATURAL



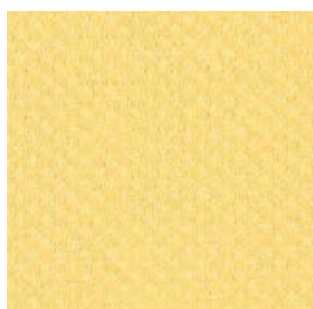
PEARL



TAUPE



WALNUT



SUN



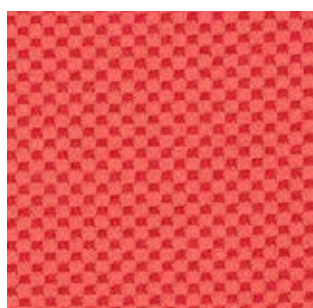
ORANGE



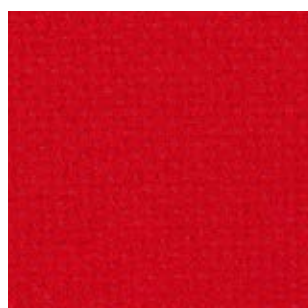
CAMEL



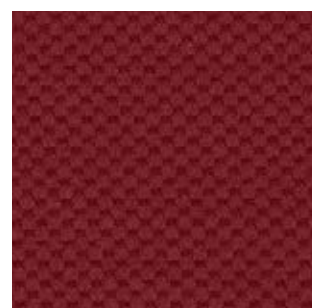
BLOSSOM



ROUGE



PASSION



EARTH



FUCHSIA



PRUNE

# FEBRIK

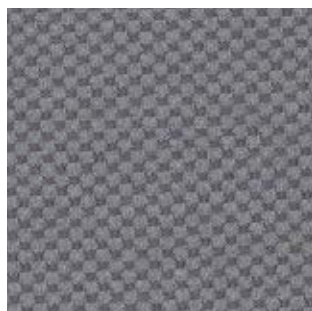
---

DOTTY

design by Febrik



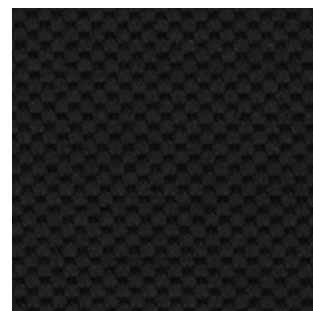
GREY



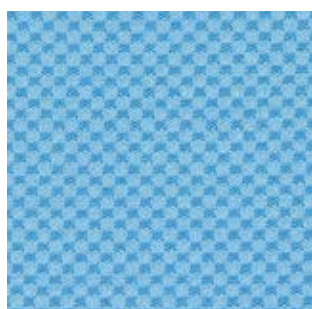
STORM



GRAPHITE



CAVIAR



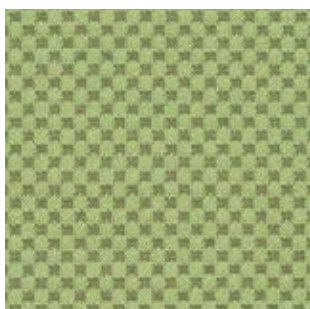
CLOUD



SKY



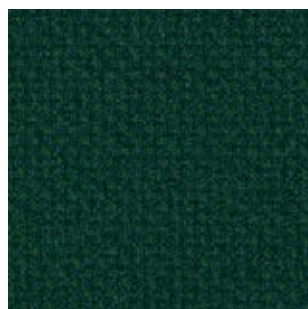
MIDNIGHT



LIME



GRASS



RANGER



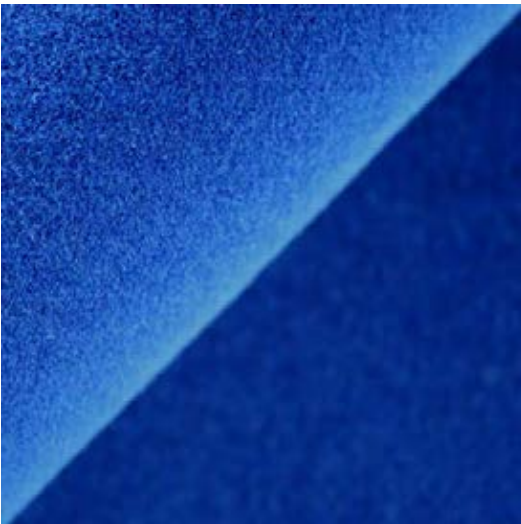
PETROL

## DROP



<b>Composition</b>	60% wool / 20% polyamide / 20% polyester	
<b>Weight</b>	600 g/m <sup>2</sup>	(tolerance +/- 5%)
<b>Width</b>	160 cm	(tolerance +/- 2%)
<b>Number of colours</b>	29	
<b>Abrasion</b>	>80.000	
<b>Pilling</b>	4 (5.000)	
<b>Fastness to rubbing</b>	dry 4 / wet 4 - 5	
<b>Fastness to light</b>	6	
<b>Flame resistance</b>	EN 1021-1/2, BS 5852 part 1, DIN 4102-B2, US Cal. Tech. Bull. 117	

## GENTLE



<b>Composition</b>	60% wool / 20% polyamide / 20% polyester + 2.0mm - 28 kg/m <sup>3</sup> flame retardant PU foam with backing knit	
<b>Weight</b>	650 g/m <sup>2</sup>	(tolerance +/- 5%)
<b>Width</b>	175 cm	(tolerance +/- 2%)
<b>Number of colours</b>	17	
<b>Abrasion</b>	>80.000	
<b>Pilling</b>	4 - 5 (5.000)	
<b>Fastness to rubbing</b>	dry 4 / wet 4	
<b>Fastness to light</b>	7	
<b>Flame resistance</b>	EN 1021-1/2, BS 5852 part 1, DIN 4102-B2, US Cal. Tech. Bull. 117	

## MOSAIC



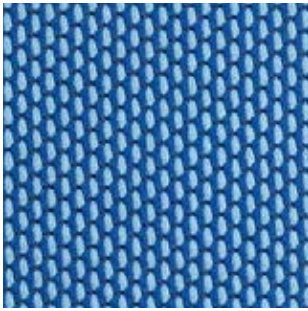
<b>Composition</b>	35% wool / 10% polyamide / 10% polyester / 5% elasthan / 40% polyester filling	
<b>Weight</b>	850 g/m <sup>2</sup>	(tolerance +/- 5%)
<b>Width</b>	180 cm	(tolerance +/- 2%)
<b>Number of colours</b>	7	
<b>Abrasion</b>	>50.000	
<b>Pilling</b>	4 - 5 (5.000)	
<b>Fastness to rubbing</b>	dry 4 - 5 / wet 4 - 5	
<b>Fastness to light</b>	6	
<b>Flame resistance</b>	EN 1021-1/2, BS 5852 part 1, DIN 4102-B2, US Cal. Tech. Bull. 117	



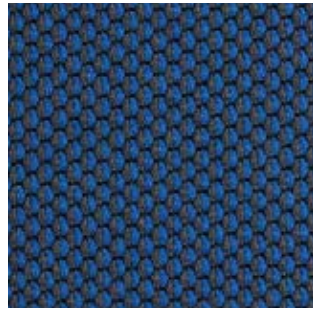
# FEBRIK

DROP

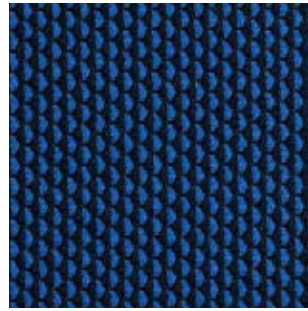
design by Anderssen & Voll



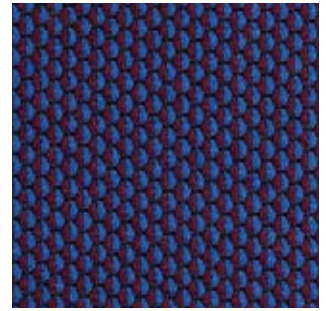
MENTHOL



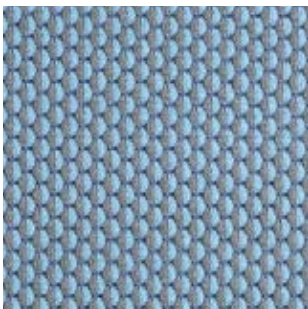
CANDYBAR



GUM



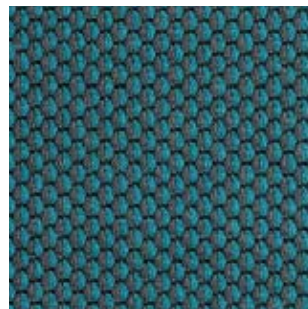
WINEGUM



PEPPERMINT



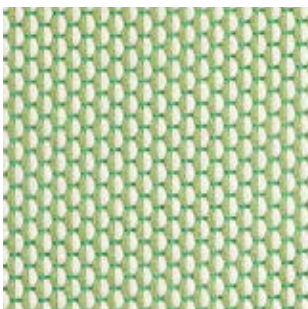
POPSICLE



SOUR



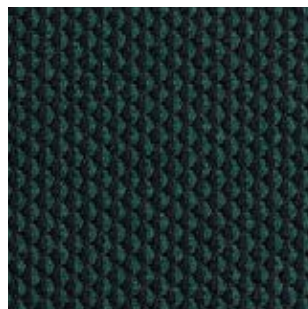
GUMMYBEAR



CANDYCANE



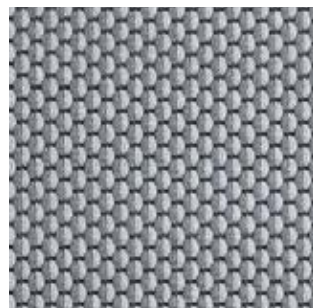
PISTACHIO



PASTILLE



SALT



BITTER

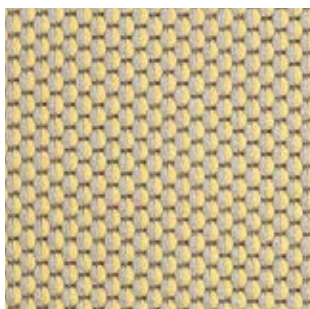


LICORICE

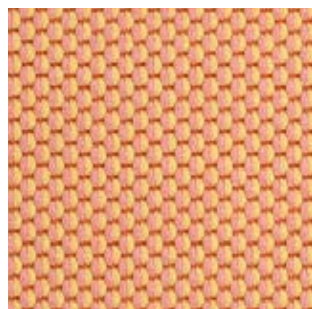
# FEBRIK

DROP

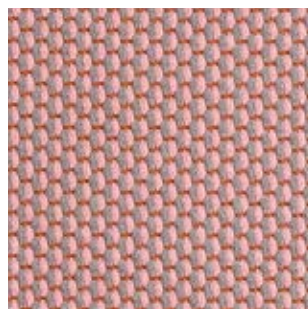
design by Anderssen & Voll



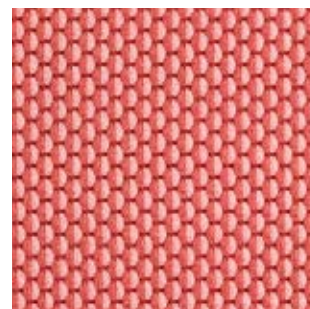
POPCORN



MARSHMALLOW



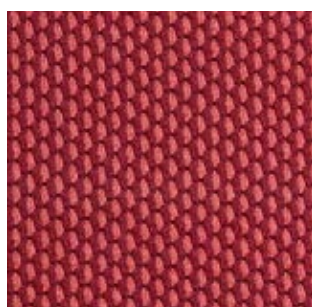
COTTONCANDY



TUMTUM



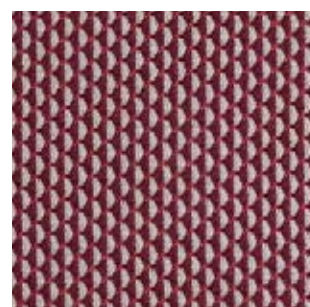
LOLLIPOP



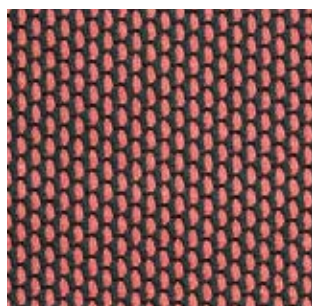
JELLY



BONBON



DONUT



MACARON



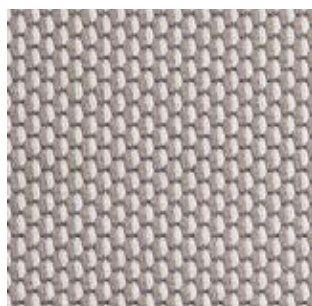
CANDYLACE



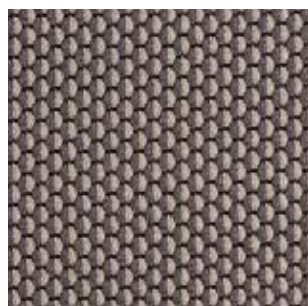
TOFFEE



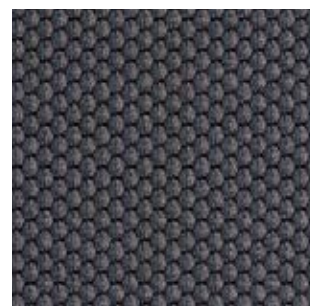
MERINGUE



NOUGAT



COOKIE



SALMIAK

# FEBRIK

---

GENTLE

design by Febrik



LIME



GRASS



AQUATIC



ROYAL



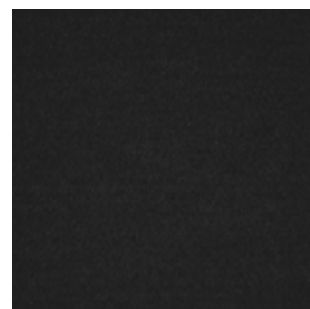
NATURAL



GREY



GRAPHITE



CAVIAR



FUCHSIA



PRUNE

# FEBRIK

---

GENTLE

design by Febrik



LINEN



CAMEL



WALNUT



CHOCOLATE



ORANGE



PASSION



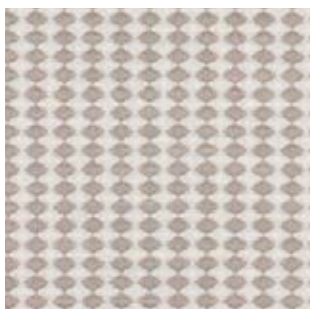
EARTH

# FEBRIK

---

MOSAIC

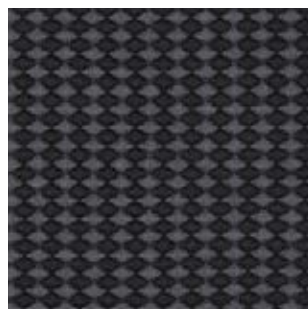
design by Febrik



SHELL



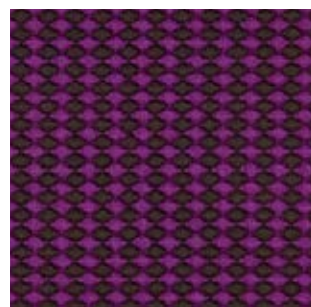
MINERAL



CHARCOAL



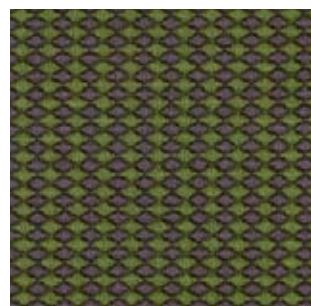
LAVA



RUBY



OCEAN



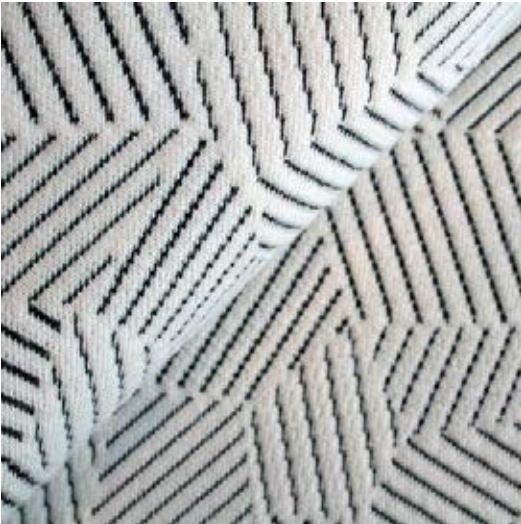
SPICE

## PITCH



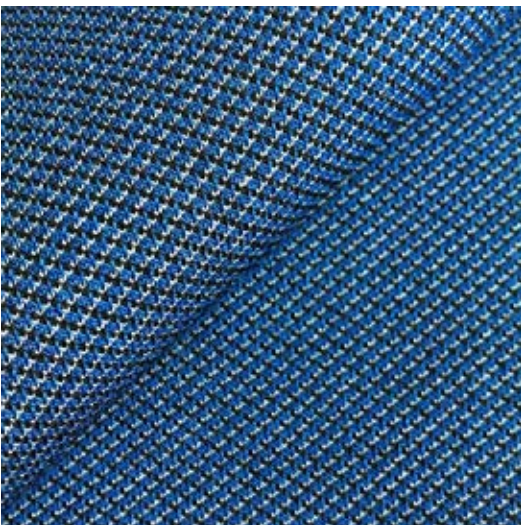
<b>Composition</b>	25% wool / 10% polyamide / 15% polyester / 50% polyester filling	
<b>Weight</b>	630 g/m <sup>2</sup>	(tolerance +/- 5%)
<b>Width</b>	160 cm	(tolerance +/- 2%)
<b>Number of colours</b>	25	
<b>Abrasion</b>	>60.000	
<b>Pilling</b>	3 (5.000)	
<b>Fastness to rubbing</b>	dry 5 / wet 5	
<b>Fastness to light</b>	6 - 7	
<b>Flame resistance</b>	EN 1021-1/2, BS 5852 part 1, DIN 4102-B2, US Cal. Tech. Bull. 117	

## RAZZLE DAZZLE



<b>Composition</b>	60% wool / 20% polyamide / 20% polyester	
<b>Weight</b>	600 g/m <sup>2</sup>	(tolerance +/- 5%)
<b>Width</b>	160 cm	(tolerance +/- 2%)
<b>Number of colours</b>	27	
<b>Abrasion</b>	>80.000	
<b>Pilling</b>	4 (5.000)	
<b>Fastness to rubbing</b>	dry 4 - 5 / wet 4 - 5	
<b>Fastness to light</b>	6	
<b>Flame resistance</b>	EN 1021-1/2, BS 5852 part 1, DIN 4102-B2, US Cal. Tech. Bull. 117	

## SHADE



<b>Composition</b>	60% wool / 20% polyamide / 20% polyester	
<b>Weight</b>	525 g/m <sup>2</sup>	(tolerance +/- 5%)
<b>Width</b>	160 cm	(tolerance +/- 2%)
<b>Number of colours</b>	35	
<b>Abrasion</b>	>80.000	
<b>Pilling</b>	4 - 5 (5.000)	
<b>Fastness to rubbing</b>	dry 4 / wet 4 - 5	
<b>Fastness to light</b>	6	
<b>Flame resistance</b>	EN 1021-1/2, BS 5852 part 1, DIN 4102-B2, US Cal. Tech. Bull. 117 IMO FTP Code part 8	

# FEBRIK

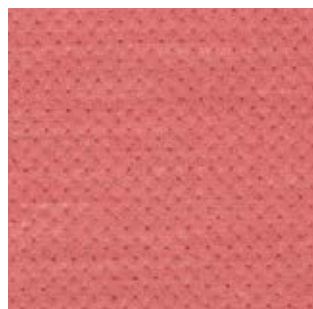
---

PITCH

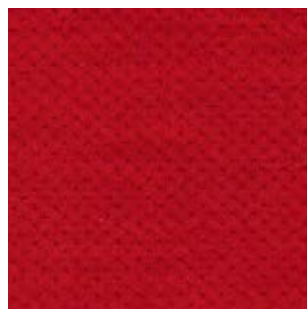
design by Febrik



BLOSSOM



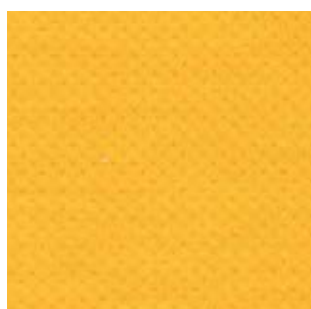
ROUGE



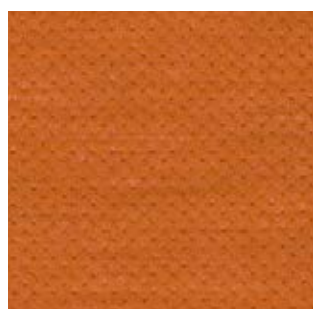
PASSION



CHARM



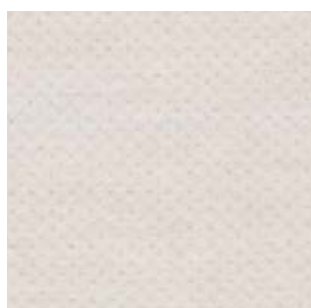
HONEY



ORANGE



GINGER



PEARL



TAUPE



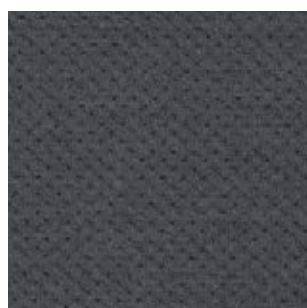
WALNUT



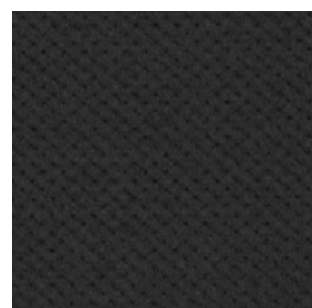
GREY



STORM



GRAPHITE



CAVIAR

# FEBRIK

---

PITCH

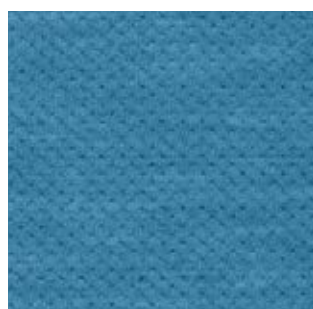
design by Febrik



GRASS



RANGER



AQUACTIC



PETROL



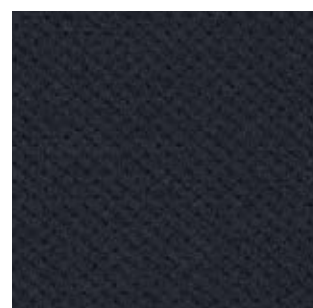
CLOUD



SKY



ROYAL



MIDNIGHT



PINK



MAGIC



PRUNE



# FEBRIK

RAZZLE DAZZLE

design by Sylvain Willenz



MIDNIGHT



DEEP



SKY



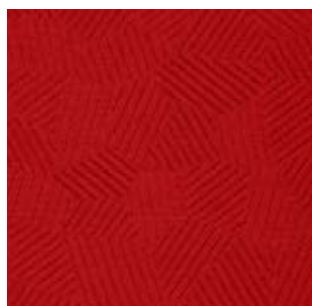
ARCTIC



GINGER



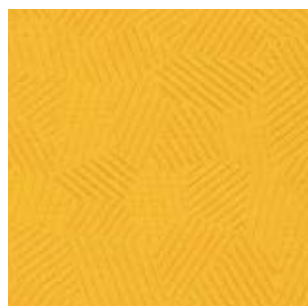
CHARM



PASSION



FLAME



HONEY



WINE



CINNABAR



BLOSSOM

# FEBRIK

RAZZLE DAZZLE

design by Sylvain Willenz



WASABI



PETROL



SAGE



RANGER



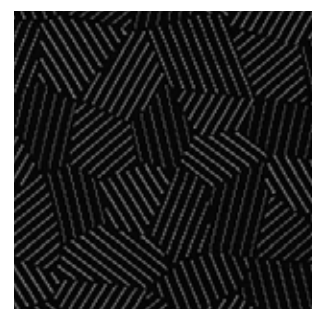
NATURAL



STORM



GRAPHITE



BASE



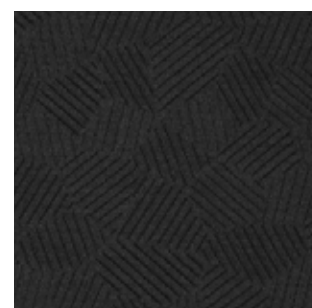
FROST



CARBON



CHARCOAL



CAVIAR



TAUPE



WALNUT



ZINC

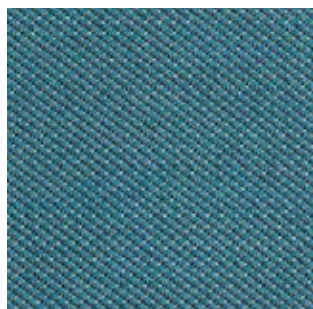
# FEBRIK

SHADE

design by Febrik



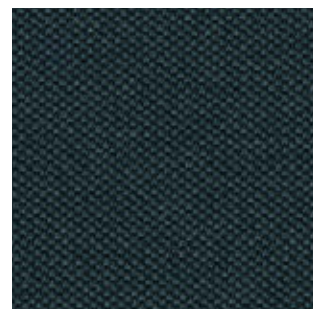
CATERPILLAR



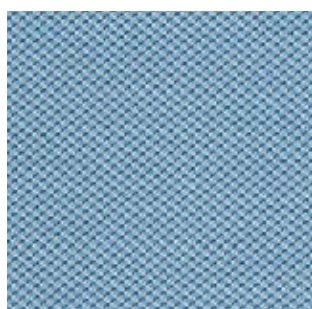
DRAGONFLY



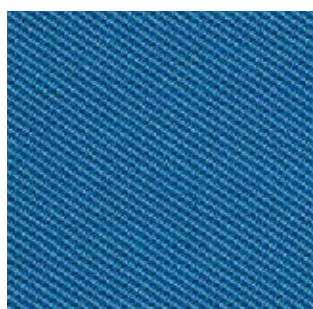
LEAFBEETLE



BIRDWING



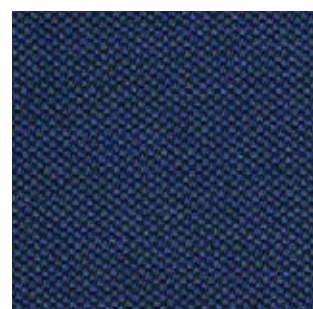
DAMSEL



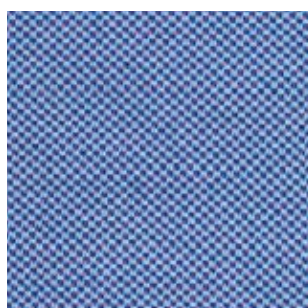
DAUBER



TARANTULA



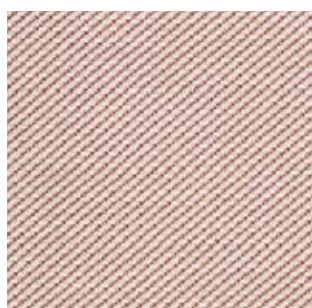
BLISTER



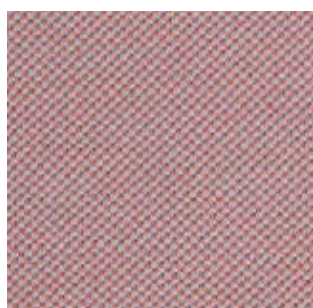
FLOWERBEETLE



JEWELBEETLE



CENTIPEDE



HAWKMOTH



HOVER

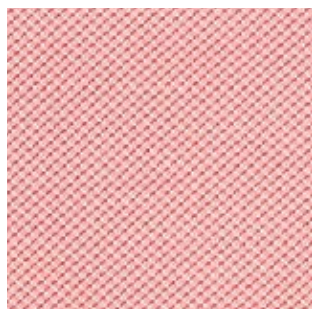


MILLIPEDE

# FEBRIK

SHADE

design by Febrik



TABBYTIGER



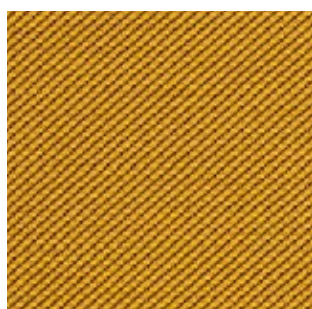
SHIELDBUG



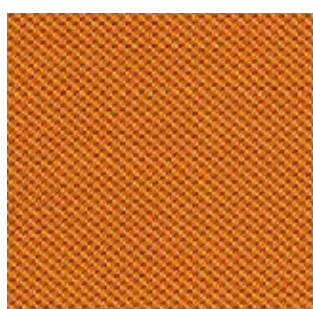
MIRID



SKIMMER



BEE



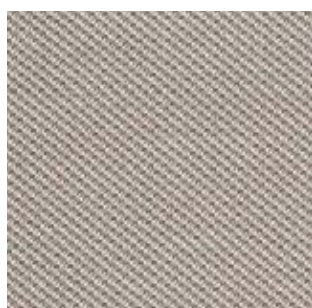
FIREFLY



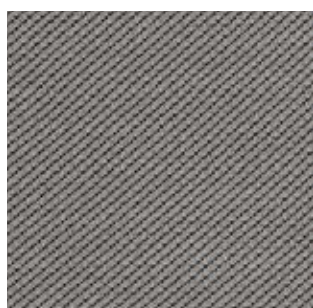
CICADA



FLY



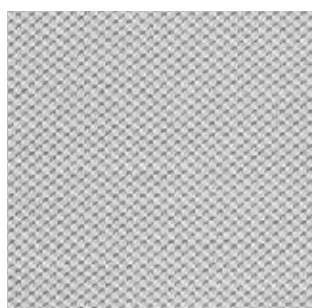
TOADBUG



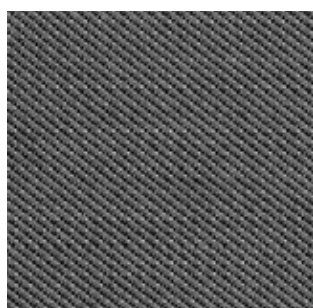
BUCKEYE



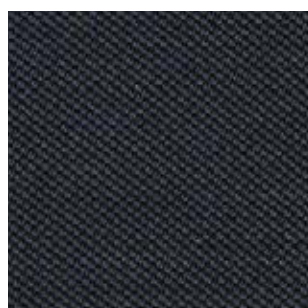
ANT



JEZEBEL



MOSQUITO



CARPENTER

# FEBRIK

---

SHADE

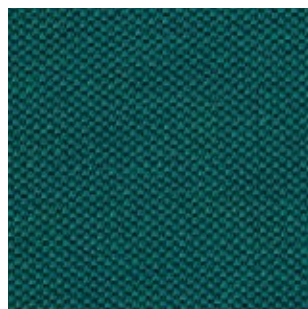
design by Febrik



BUTTERFLY



MANTIS



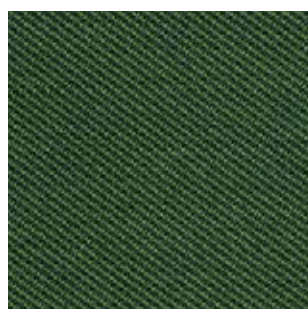
DUNGBEETLE



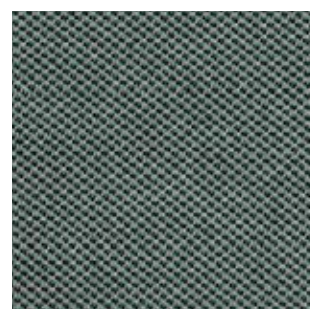
MOTH



GRASSHOPPER



ROBBER



SOLDIERFLY

## SPRINKLES



<b>Composition</b>	30% wool / 10% polyamide / 20% polyester / 40% polyester filling	
<b>Weight</b>	670 g/m <sup>2</sup>	(tolerance +/- 5%)
<b>Width</b>	160 cm	(tolerance +/- 2%)
<b>Number of colours</b>	23	
<b>Abrasion</b>	>60.000	
<b>Pilling</b>	4 (5.000)	
<b>Fastness to rubbing</b>	dry 4 - 5 / wet 4	
<b>Fastness to light</b>	7	
<b>Flame resistance</b>	EN 1021-1/2, BS 5852 part 1, DIN 4102-B2, US Cal. Tech. Bull. 117	

## STITCH



<b>Composition</b>	20% wool / 9% polyamide / 10% polyester / 1% elasthan / 60% polyester filling	
<b>Weight</b>	1.100 g/m <sup>2</sup>	(tolerance +/- 5%)
<b>Width</b>	180 cm	(tolerance +/- 2%)
<b>Number of colours</b>	17	
<b>Abrasion</b>	>50.000	
<b>Pilling</b>	4 (5.000)	
<b>Fastness to rubbing</b>	dry 4 - 5 / wet 4 - 5	
<b>Fastness to light</b>	6	
<b>Acoustic</b>	aw 0.6	NRC 0.55
<b>Flame resistance</b>	EN 1021-1/2, BS 5852 part 1, DIN 4102-B2, US Cal. Tech. Bull. 117	

## SUMMIT



<b>Composition</b>	20% wool / 5% polyamide / 15% polyester / 60% polyester filling	
<b>Weight</b>	900 g/m <sup>2</sup>	(tolerance +/- 5%)
<b>Width</b>	200 cm	(tolerance +/- 2%)
<b>Number of colours</b>	7	
<b>Abrasion</b>	>50.000	
<b>Pilling</b>	4 (5.000)	
<b>Fastness to rubbing</b>	dry 5 / wet 4 - 5	
<b>Fastness to light</b>	6	
<b>Flame resistance</b>	EN 1021-1/2, BS 5852 part 1, DIN 4102-B2, US Cal. Tech. Bull. 117	

# FEBRIK

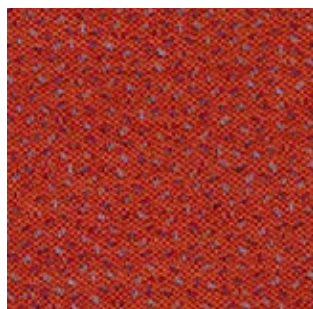
---

SPRINKLES

design by Bertjan Pot



HORNBILL



ROSELLA



SUNBIRD



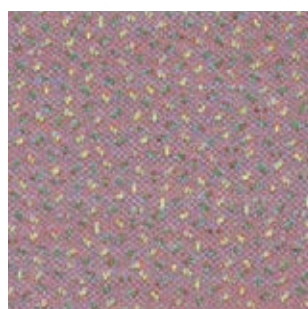
CROSSBILL



WARBLER



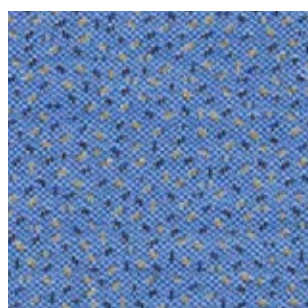
LOVEBIRD



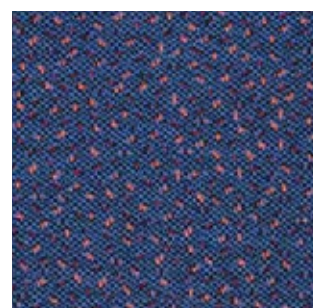
CHAFFINCH



ROLLER



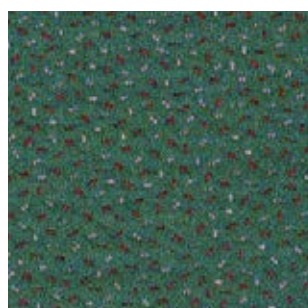
BLUEBIRD



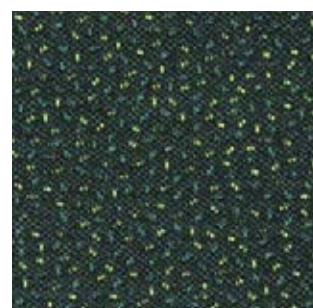
PARROT



PARAKEET



KINGFISHER



STARLING

# FEBRIK

SPRINKLES

design by Bertjan Pot



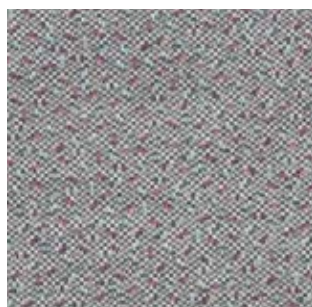
DUCK



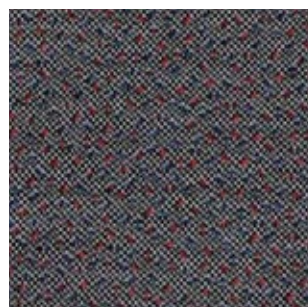
JAY



JACKDAW



PIGEON



WOODPECKER



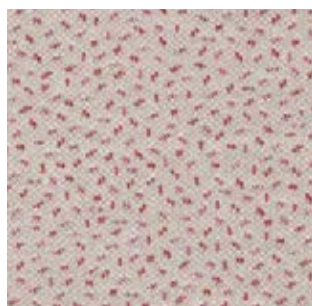
CROW



HAWK



HEN



COCKATOO



FINCH



# FEBRIK

---

STITCH

design by Febrik



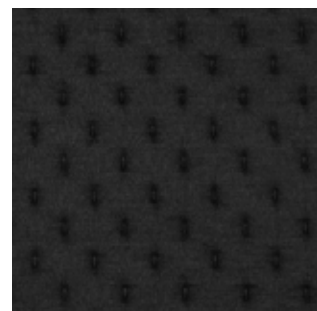
NATURAL



GREY



GRAPHITE



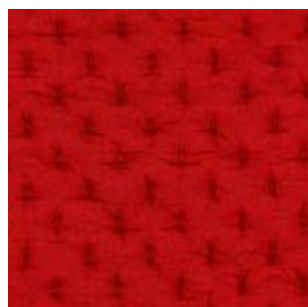
CAVIAR



SUN



ORANGE



PASSION



EARTH



LINEN



CAMEL



WALNUT



CHOCOLATE

# FEBRIK

---

STITCH

design by Febrik



AQUATIC



ROYAL



FUCHSIA



PRUNE



GRASS

# FEBRIK

---

SUMMIT

design by Febrik



GRAVEL



STREAM



GLOW



FLASH



STREAK



SPARKLE



FOCUS

## TRIANGLE



<b>Composition</b>	17% wool / 5% polyamide / 13% polyester / 65% polyester filling	
<b>Weight</b>	875 g/m <sup>2</sup>	(tolerance +/- 5%)
<b>Width</b>	165 cm	(tolerance +/- 2%)
<b>Number of colours</b>	17	
<b>Abrasion</b>	>60.000	
<b>Pilling</b>	4 - 5 (5.000)	
<b>Fastness to rubbing</b>	dry 4 / wet 4	
<b>Fastness to light</b>	7	
<b>Flame resistance</b>	EN 1021-1/2, BS 5852 part 1, DIN 4102-B2, US Cal. Tech. Bull. 117	

## TWILL



<b>Composition</b>	60% wool / 20% polyamide / 20% polyester	
<b>Weight</b>	500 g/m <sup>2</sup>	(tolerance +/- 5%)
<b>Width</b>	160 cm	(tolerance +/- 2%)
<b>Number of colours</b>	31	
<b>Abrasion</b>	>80.000	
<b>Pilling</b>	4 (5.000)	
<b>Fastness to rubbing</b>	dry 4 / wet 4 - 5	
<b>Fastness to light</b>	6 - 7	
<b>Flame resistance</b>	EN 1021-1/2, BS 5852 part 1, DIN 4102-B2, US Cal. Tech. Bull. 117 IMO FTP Code part 8	

## UNIFORM



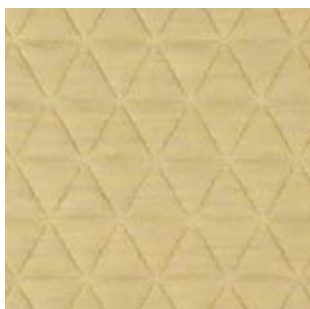
<b>Composition</b>	68% wool / 22% polyamide / 10% polyester + 2.0mm - 28 kg/m <sup>3</sup> flame retardant PU foam with backing knit	
<b>Weight</b>	490 g/m <sup>2</sup>	(tolerance +/- 5%)
<b>Width</b>	165 cm	(tolerance +/- 2%)
<b>Number of colours</b>	34	
<b>Abrasion</b>	>80.000	
<b>Pilling</b>	4 (5.000)	
<b>Fastness to rubbing</b>	dry 4 - 5 / wet 4 - 5	
<b>Fastness to light</b>	6	
<b>Flame resistance</b>	EN 1021-1/2, BS 5852 part 1, DIN 4102-B2, US Cal. Tech. Bull. 117 IMO FTP Code part 8	

# FEBRIK

---

TRIANGLE

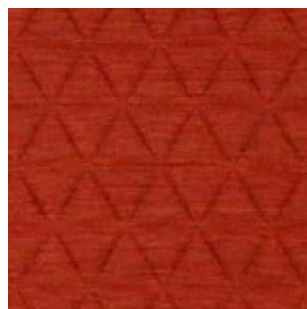
design by Bertjan Pot



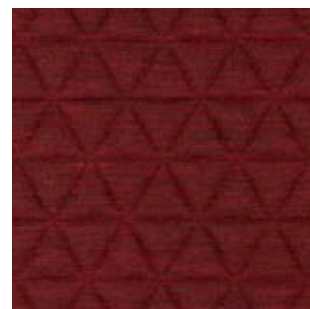
BANANA



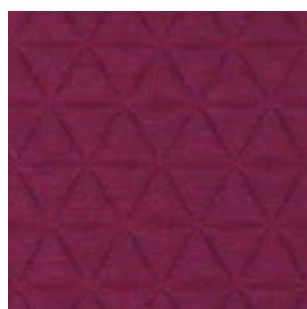
BLUSH



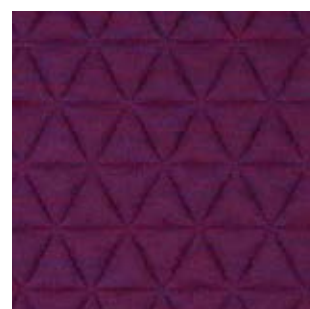
FLAME



RUMBA



VIOLET



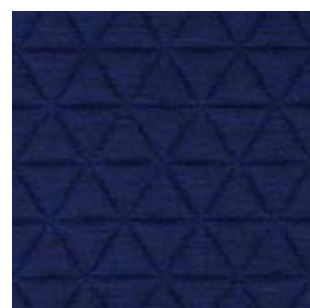
BLUEBERRY



ICE



HYDRO



SAFFIER



OASE



SWAMP

# FEBRIK

---

TRIANGLE

design by Bertjan Pot



PEBBLE



COPPER



BROWNIE



SMOKE



CHALK



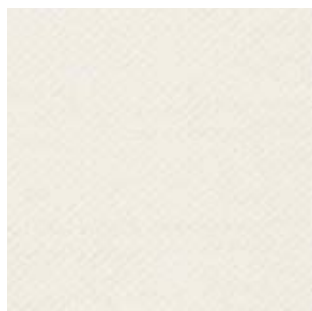
CHARCOAL

# FEBRIK

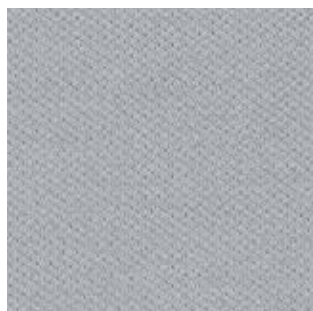
---

TWILL

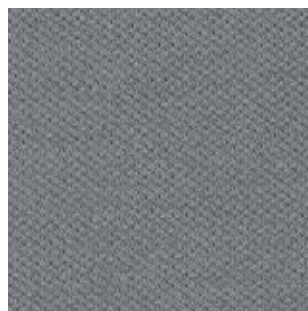
design by Febrik



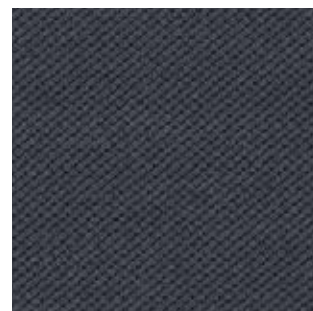
NATURAL



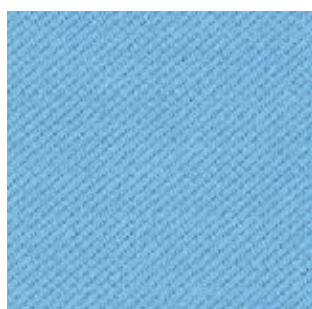
GREY



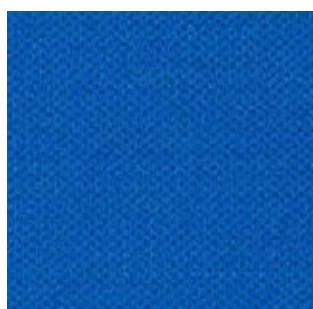
STORM



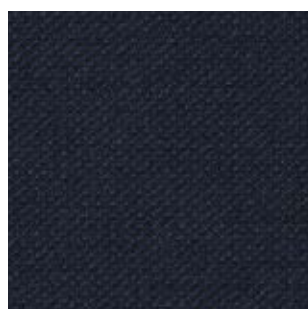
GRAPHITE



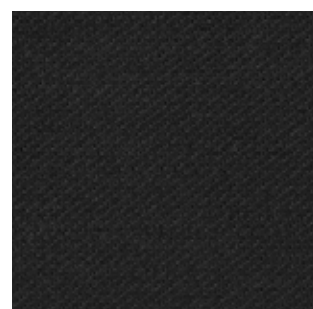
CLOUD



SKY



MIDNIGHT



CAVIAR



PETROL



AQUATIC



ROYAL



MAGIC



BLOSSOM



PINK



FUCHSIA



PRUNE

# FEBRIK

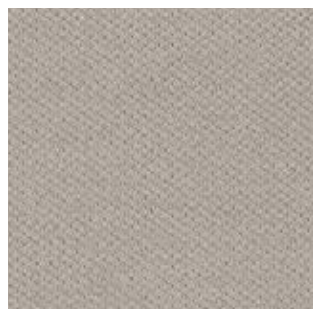
---

TWILL

design by Febrik



PEARL



LINEN



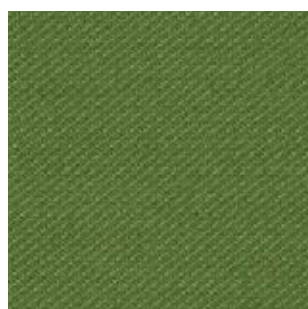
WALNUT



CHOCOLATE



LIME



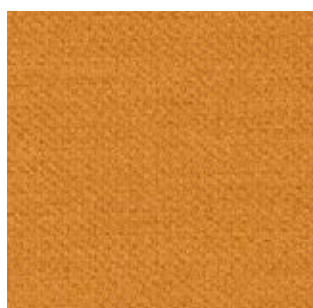
GRASS



RANGER



HONEY



GINGER



CAMEL



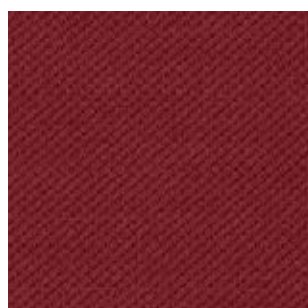
ORANGE



ROUGE



PASSION



EARTH



CHARM



# FEBRIK

---

UNIFORM

colours by Febrik



BLOSSOM



PINK



FUCHSIA



MAGIC



PRUNE



ROUGE



PASSION



EARTH



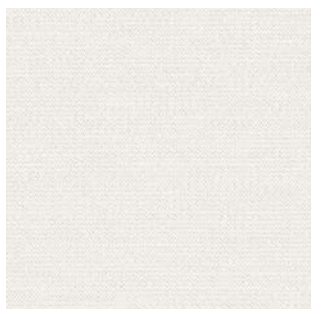
CHARM

# FEBRIK

---

UNIFORM

colours by Febrik



NATURAL



PEARL



TAUPE



FOSSIL



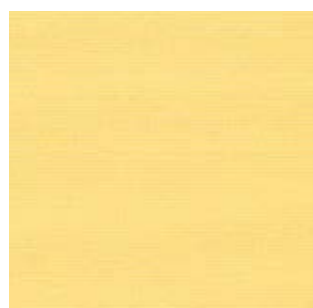
LINEN



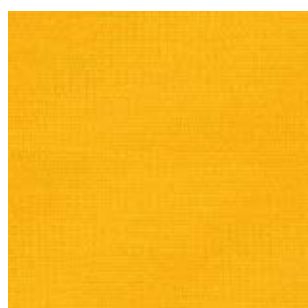
WALNUT



CHOCOLATE



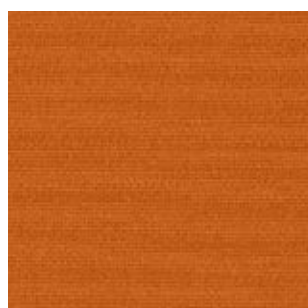
SUN



HONEY



CAMEL



ORANGE



GINGER

# FEBRIK

---

UNIFORM

colours by Febrik



LIME



GRASS



RANGER



AQUATIC



PETROL



CLOUD



SKY



ROYAL



MIDNIGHT



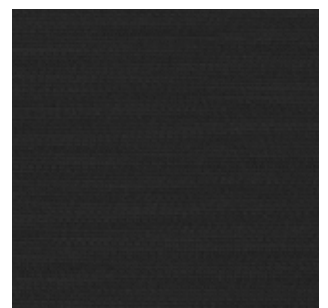
GREY



STORM

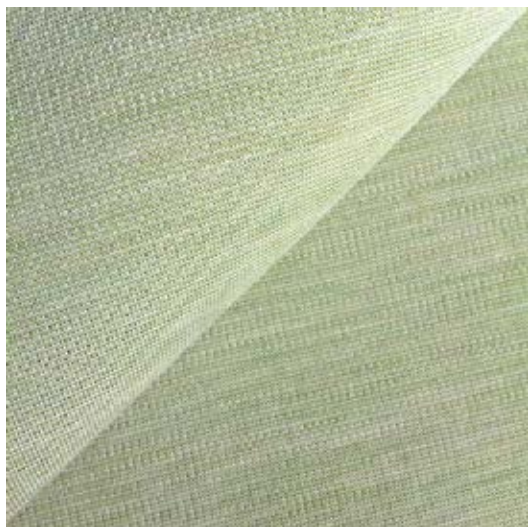


GRAPHITE



CAVIAR

## UNIFORM MÉLANGE



<b>Composition</b>	68% wool / 22% polyamide / 10% polyester + 2.0mm - 28 kg/m <sup>3</sup> flame retardant PU foam with backing knit	
<b>Weight</b>	490 g/m <sup>2</sup>	(tolerance +/- 5%)
<b>Width</b>	165 cm	(tolerance +/- 2%)
<b>Number of colours</b>	38	
<b>Abrasion</b>	>80.000	
<b>Pilling</b>	4 (5.000)	
<b>Fastness to rubbing</b>	dry 4 - 5 / wet 4 - 5	
<b>Fastness to light</b>	6	
<b>Flame resistance</b>	EN 1021-1/2, BS 5852 part 1, DIN 4102-B2, US Cal. Tech. Bull. 117 IMO FTP Code part 8	

# FEBRIK

UNIFORM MÉLANGE

colours by Febrik



ALOË



OASE



CYAN



PEACOCK



BANANA



MINT



CACTUS



ICE



SEA



DUSK



INK



JEANS

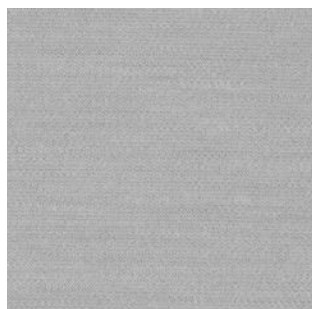


HYDRO

# FEBRIK

UNIFORM MÉLANGE

colours by Febrik



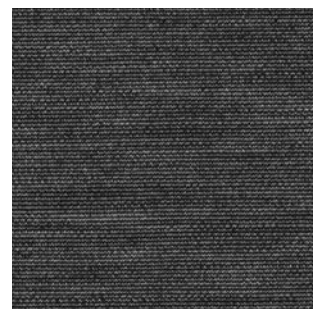
SMOKE



ASH



STONE



CHALK



SHELL



CLAY



SOIL



CAFÉ



CHARCOAL



BROWNIE



JUNE



SUNSET



AUTUMN



SIENNA

# FEBRIK

---

UNIFORM MÉLANGE

colours by Febrik



CORAL



RUMBA



SYRAH



TANGO



VIOLET



RASPBERRY



FIG



BLUEBERRY



SOLAR



COPPER



OIL

**kvadrat**



# MESSENGER



# MESSENGER



# BAZIL



# Blitz 2



# Cava 3



# Cava 3



# Divina 3



# Divina 3





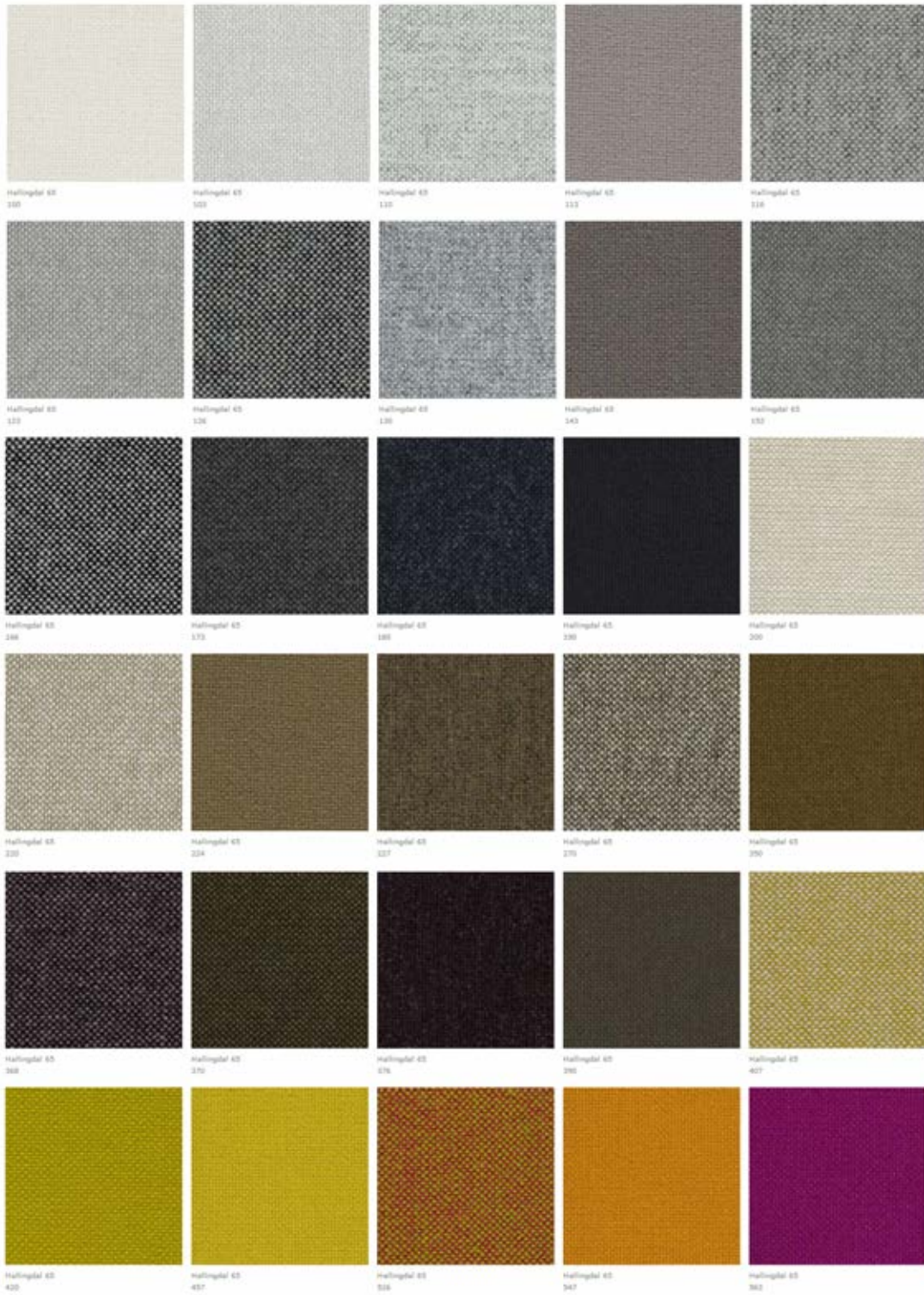
# Divina MD



# Divina Melange 2



# Hallingdal 65



# Hallingdal 65



# Hero



# Hot



# Pause 4



# Pause 4





# Remix 2



## Remix 2



# Rime



# Star 2



# Steelcut 2



# Steelcut 2



# Steelcut Trío 2



# Steelcut Trío 2





# Tonica



# Tonus 4



# Tonus 4



# Topas 2



# Topas 2



# Vale



Vale  
102



Vale  
112



Vale  
182



Vale  
222



Vale  
342



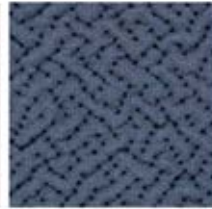
Vale  
382



Vale  
662



Vale  
882



Vale  
722



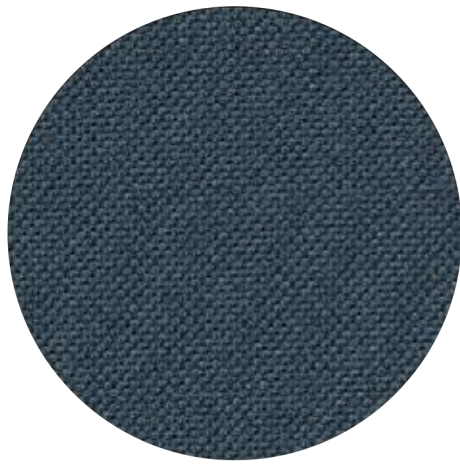
Vale  
782

## Vidar 2



**Gabriel<sup>®</sup>**

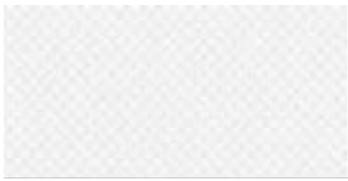




**ATLANTIC™**

---

by Gabriel



60061



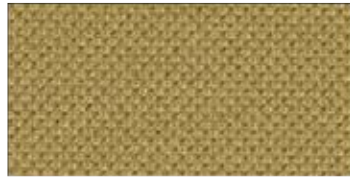
60063



64117



60141



61166



61078



63033



60142



63055



60025



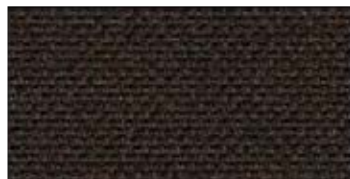
61163



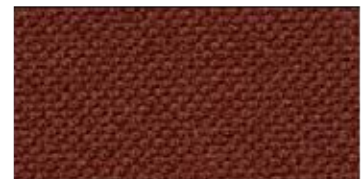
63057



60999



61165



61164



63056



64116



63034



64105



65074



64093



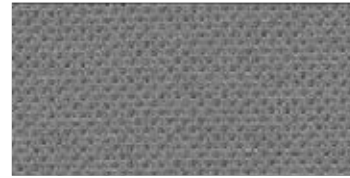
65073



64089



65075



60011



64092



65037



60143



60143



66126



66063



62049



66125



66086



62048



66062



68054



66041



67030



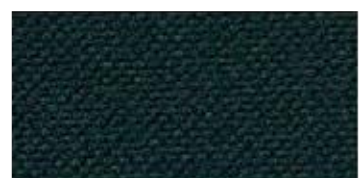
68099



66064



66057



67043



**BREEZE™**

---

by Gabriel



65077



60074



60000



62063



60033



61126



63016



60003



61003



64146



61060



61124



64119



60999



60051



64089



64161



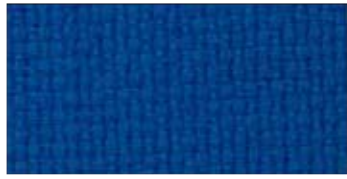
66111



68135



64058



66075



68133



61125



66005



68072



65012



66112



68134



65077



66127



68136



**EUROPOST 2™**  
**EUROPOST WELDED™**

---

by Gabriel





61107



60003



61003



61004



66056



61052



61005



60016



60058



61109



60017



W40 4063 60016



W25 4073 60051



60051



60999



60000

W40 4063 60000



63016



63073

W40 4063 63072



63072



64070



64150



63004



64149



64009



63070



64068



64035



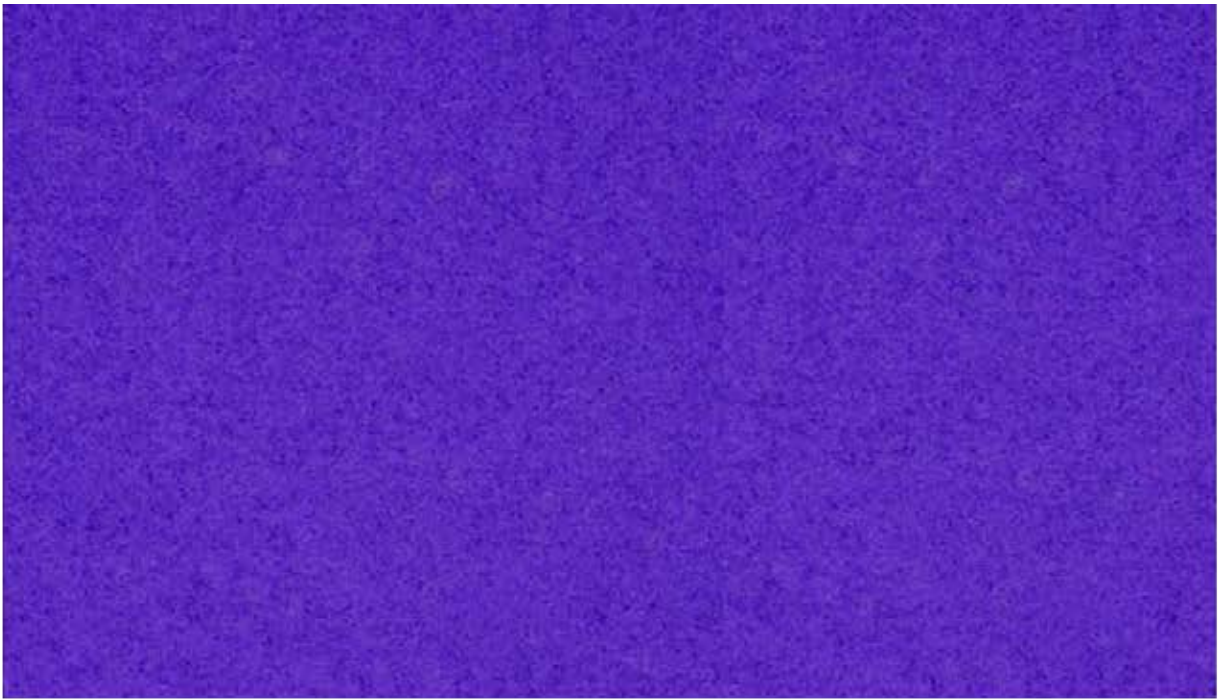
61108



64045



65069



65072



65070



66118



67066



65071



66115



67016



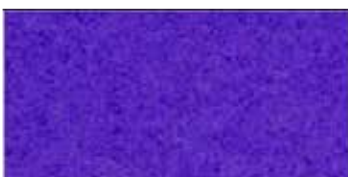
W25 4073 65071



66119



66116



65072



66039



66117



W25 4073 62061



62061



68126



62060



68035



68127



68072



68030



68128



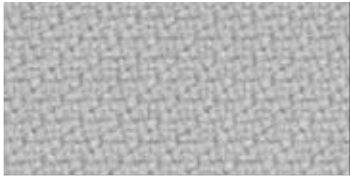
68003



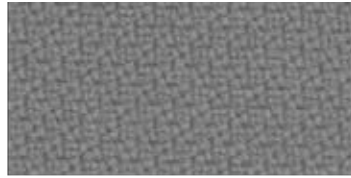
**STEP™**

---

by Gabriel



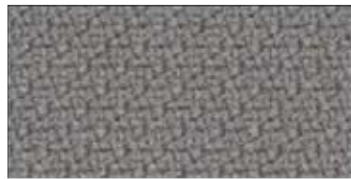
60004



60091



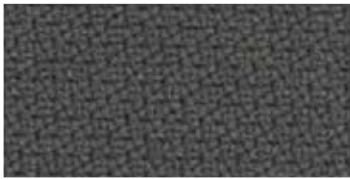
61149



60011



62057



60092



61103



66019



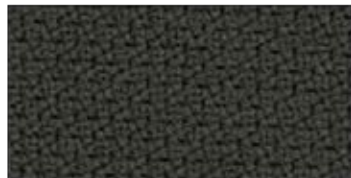
60090



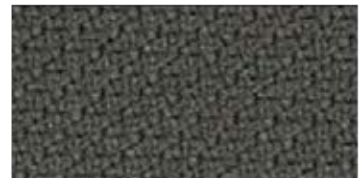
61150



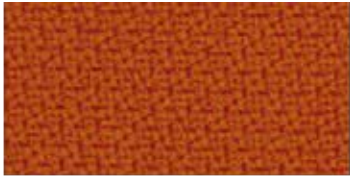
60999



60089



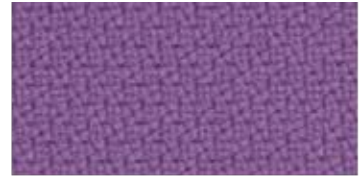
60021



63082



64178



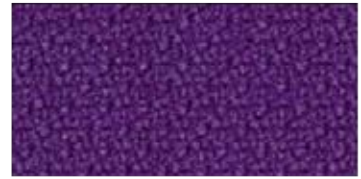
65092



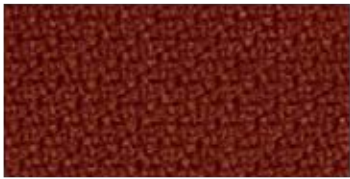
63012



64180



65023



63075



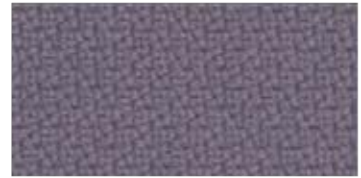
64179



65047



64177



65093



64159



64013



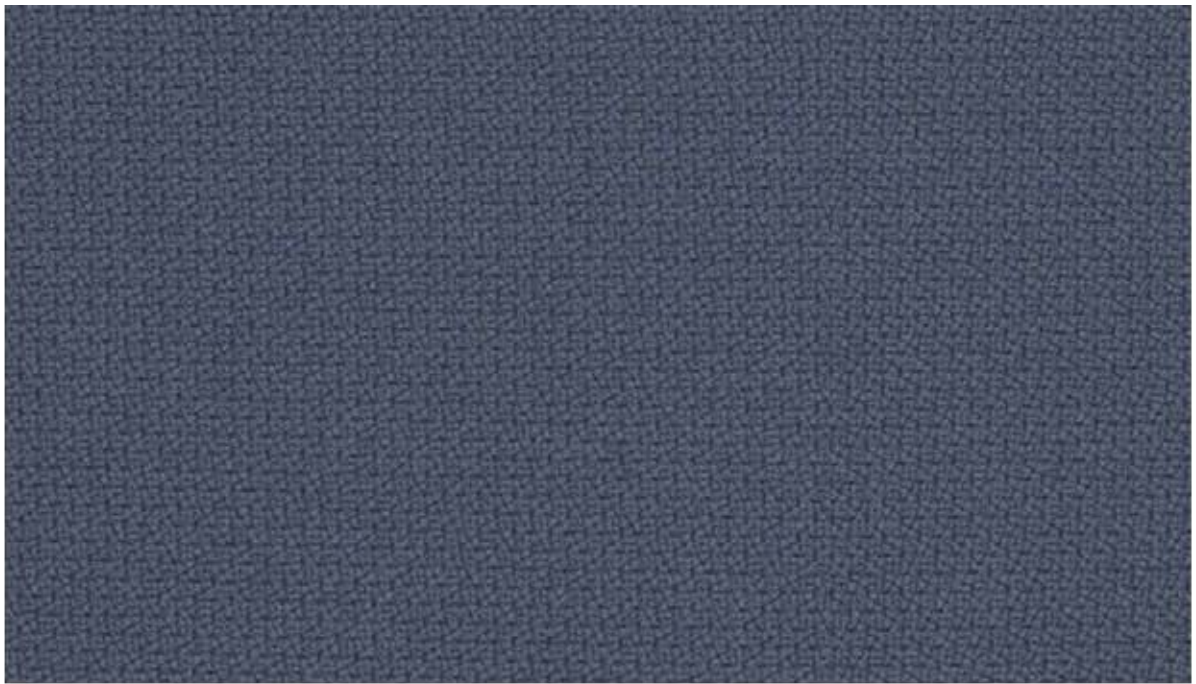
65094



61102



65095



66152



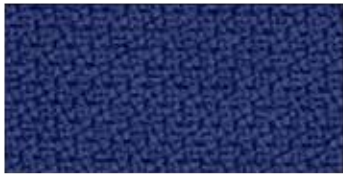
65090



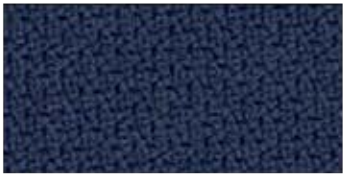
66152



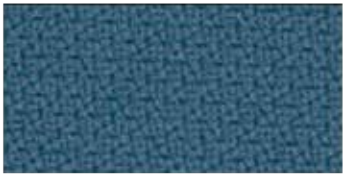
67004



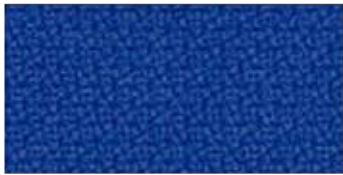
65091



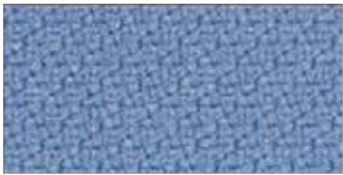
66148



67072



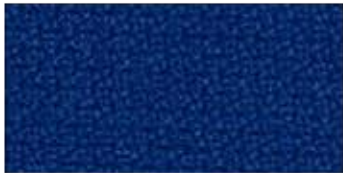
66150



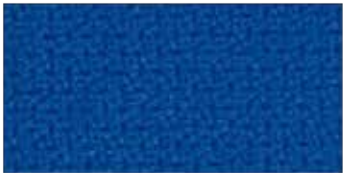
66018



67073



66149



66151



67007



65018



65011



68158

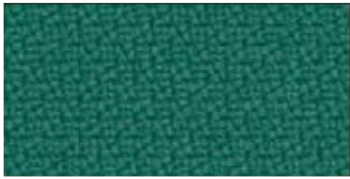




68118



62073



68157



68163



68164



68159



68162



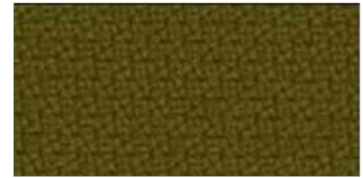
68119



68160



68120



68165



68161



68121



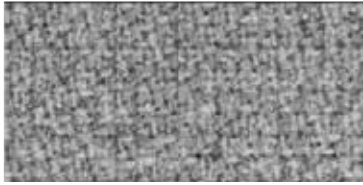
# STEP MELANGE™

---

by Gabriel



61104



60004



61149



60011



60090



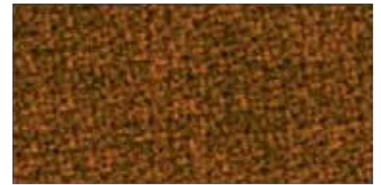
62057



60021



61152



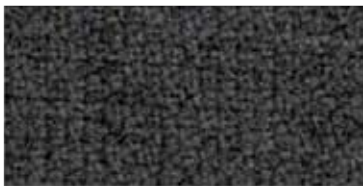
63082



61103



61151



60092



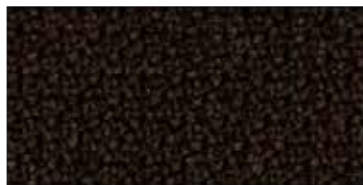
61150



63075



66019



61102



64177



64182



65093



64178



64181



65094



64179



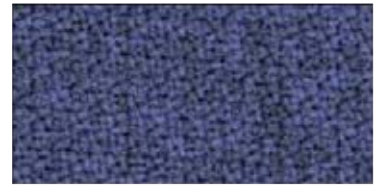
65092



64013



65023



65090



64159



65047



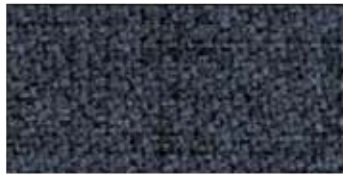
65091



66152



66018



66152



67004



66148



67072



66150



66151



67007



66149



65018



65011



68118



68157



68163



62073



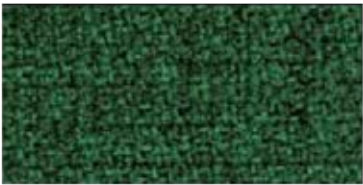
68159



68162



68119



68160



68120



68165



68158



68161



68121

# FEBRIK

## FABRIC

BEANS  
CROSS  
DOTTY  
DROP  
GENTLE  
MOSAIC  
PITCH  
RAZZLE DAZZLE  
SHADE  
SPRINKLES  
STITCH  
SUMMIT  
TRIANGLE  
TWILL  
UNIFORM  
UNIFORM MÉLANGE

## GROUP

F  
F  
E  
E  
F  
F  
E  
E  
E  
E  
F  
F  
E  
E  
E  
E

# GABRIEL

## FABRIC

ATLANTIC  
BREEZE  
EUROPOST 2  
EUROPOST WELDED  
STEP  
STEP MELANGE

## GROUP

C  
D  
D  
E  
C  
C

# KVADRAT

## FABRIC

BAZIL  
BLITZ 2  
CAVA3  
DIVINA 3  
DIVINA MD  
DIVINA MELANGE 2  
HALLINGDAL 65  
HOT  
PAUSE 4  
REMIX 2  
RIME  
STAR  
STEELCUT 2  
STEELCUT TRIO 2  
TONICA  
TOPAS 2  
VALE  
VIDAR 2

## GROUP

D  
D  
D  
E  
F  
F  
E  
D  
D  
D  
E  
E  
E  
E  
E  
E  
E  
G